



# GMT MONTHLY MEMBERSHIP PROGRESS REPORT

Results as of: 6/30/2020

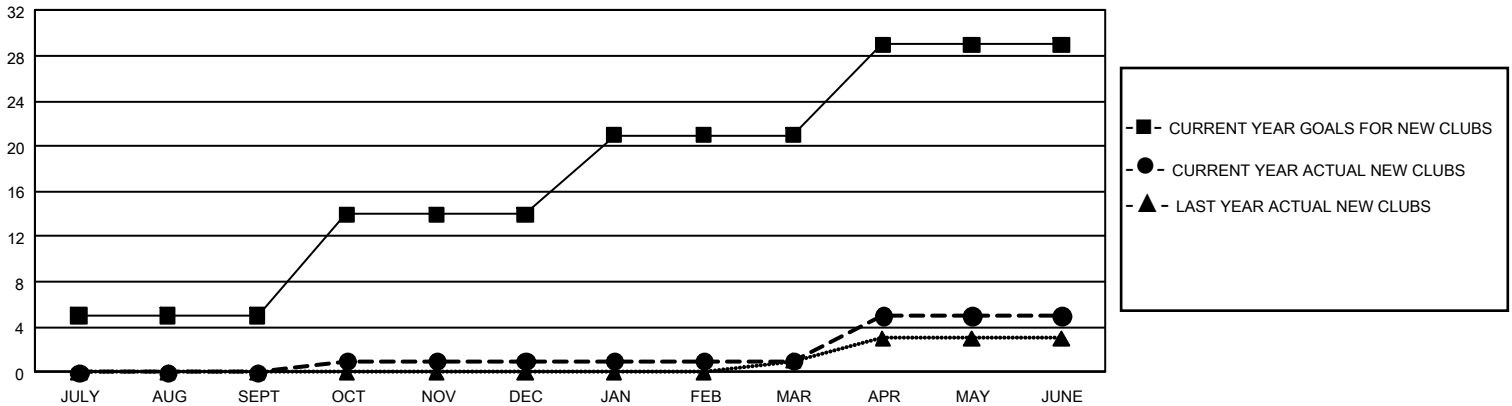
## GMT Constitutional Area 1, Group E

GMT: OPEN

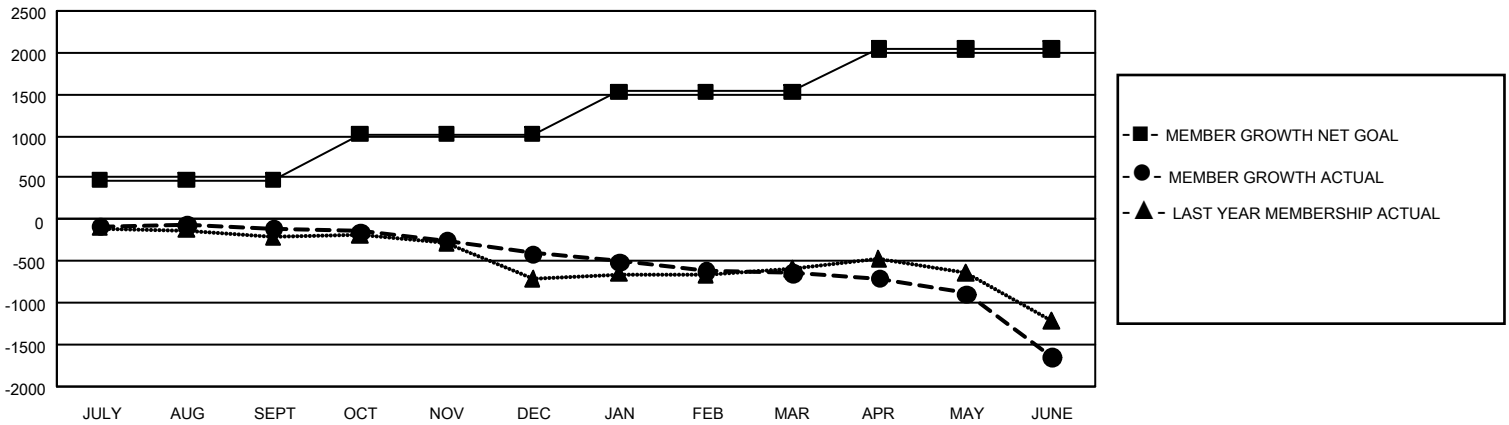
REPORT DOES NOT INCLUDE CLUBS IN UNDISTRICTED AREAS.

Clubs				Members			
RESULTS FOR 2019-2020				RESULTS FOR 2019-2020			
QUARTER	NEW CLUB GOAL	NEW CLUBS	DROPPED CLUBS	QUARTER	MEMBER GROWTH NET GOAL	MEMBER GROWTH ACTUAL	DROPPED MEMBERS ACTUAL (including transfers)
JULY/AUG/SEPT	15	0	3	JULY/AUG/SEPT	1,407	795	821
OCT/NOV/DEC	27	1	8	OCT/NOV/DEC	1,656	725	972
JAN/FEB/MAR	21	0	7	JAN/FEB/MAR	1,527	764	902
APR/MAY/JUNE	24	4	7	APR/MAY/JUNE	1,557	350	1,307

**GOALS AND ACTUAL NEW CLUBS CUMULATIVE**



**GOALS AND ACTUAL MEMBERS CUMULATIVE**



DROPPED CLUBS: 25	711 CLUBS OF 1,223 ADDED 1 OR MORE NEW MEMBERS	<b>GENDER DISTRIBUTION</b>
<b>DROPPED MEMBERS</b>		MALE            26,492 (74.76%)
DECEASED            553		FEMALE        8,945 (25.24%)
CLUB CANCELLED    106	<a href="#">CLICK HERE FOR CUMULATIVE MEMBERSHIP DATA</a>	TOTAL FAMILY UNIT MEMBERS            6,190
OTHER                3,342		FAMILY MEMBERS PAYING HALF DUES    3,161
TOTAL                4,001		